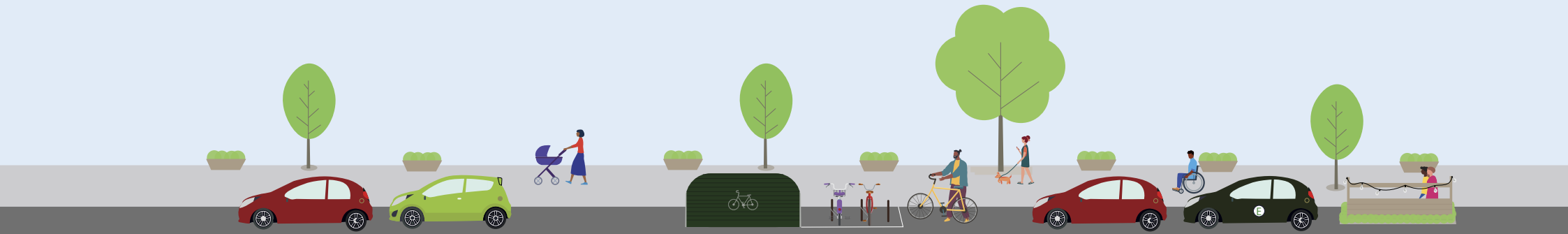
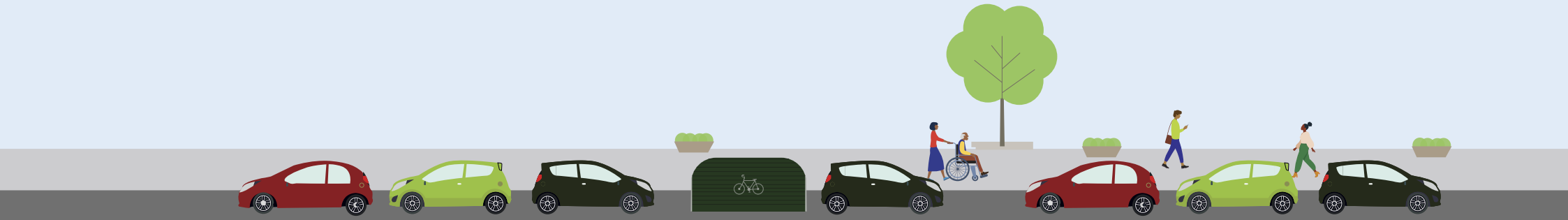


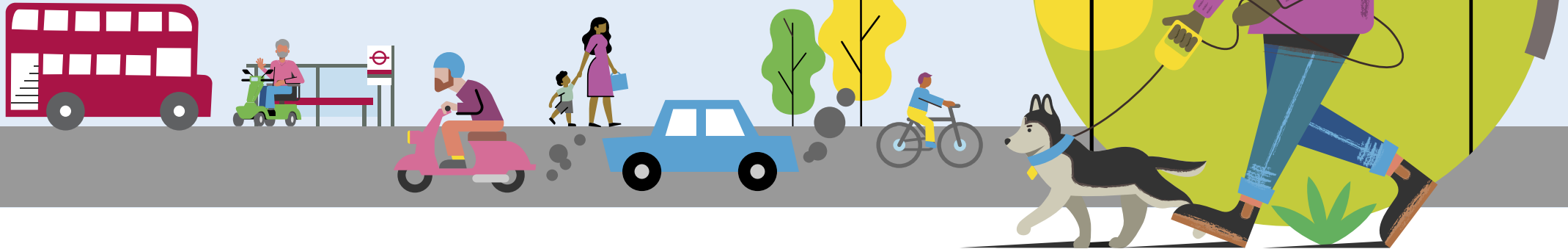
Healthy Streets, Healthy Travel: Cleaner, Fairer Parking



Why Are We Changing the Parking Fees, Charges, Terms and Conditions?

Changes to parking fees, charges, terms and conditions aim to discourage inessential use and ownership of motor vehicles. Where people have an essential need we are also encouraging the use of low emission vehicles. These changes will help to reduce carbon emissions, improve road safety, and air quality as well as increase levels of walking, cycling and public transport use. Measures to reduce car ownership will also help to free up road space for those who need to use a motor vehicle the most and to encourage walking and cycling, which is the most affordable way of getting around the borough particularly during the cost-of-living crisis.

Cleaner Air with Healthier Forms of Travel
Choosing walking, cycling, or public transport helps to cut carbon emissions, reduce health-damaging air pollution and create safer, cleaner streets.

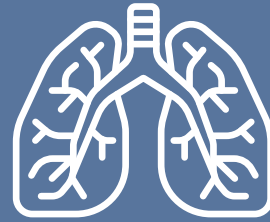


Short Stats



Climate

- Road transport accounts for 14% of CO2 in Camden



Air Quality

- Road transport accounts for one-third of NO2 emissions in Camden
- Road transport accounts for 20% of PM2.5 emissions in Camden



Road Safety (CTS)

- Supporting the Mayor's Vision Zero ambition by having no Killed or Seriously Injured (KSI) casualties on Camden's road by 2041.



Cleaner, Fairer Parking: What's Changing?

From Autumn 2024, Camden is introducing amendments to parking fees, charges, terms and conditions to:

- **Encourage sustainable travel:**

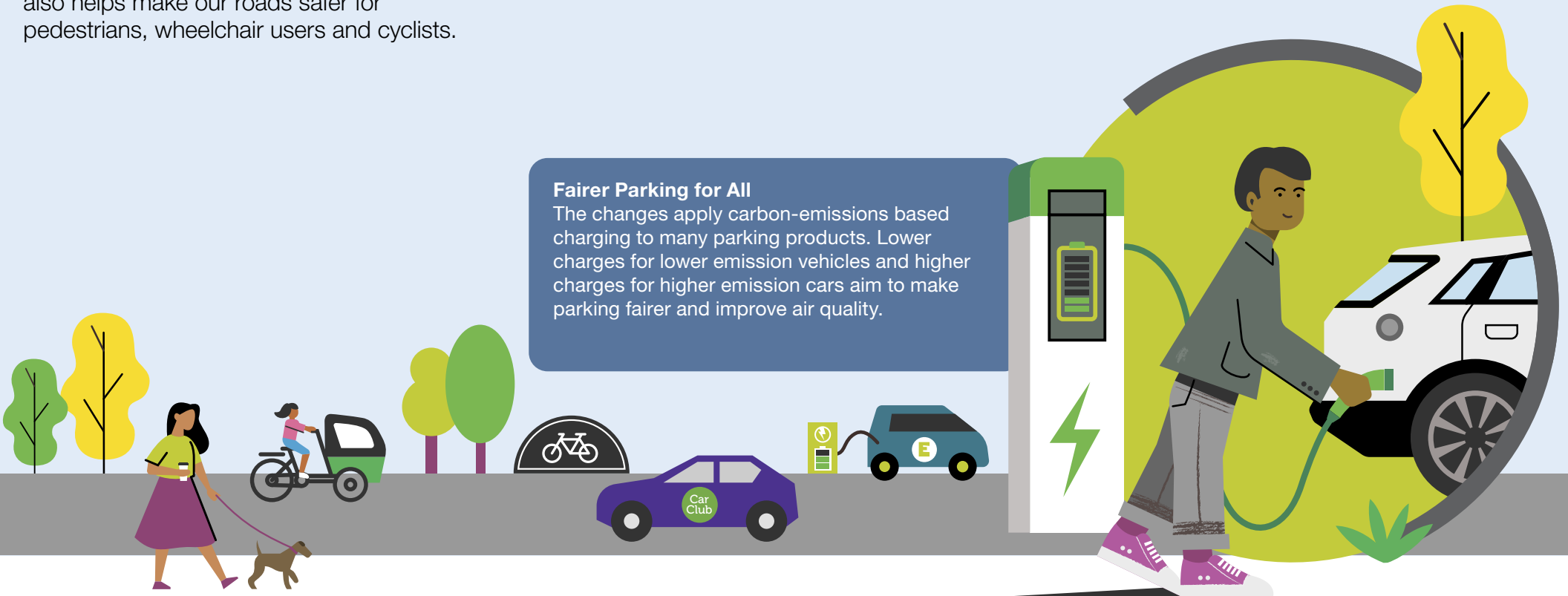
Pricing and changes to terms and conditions will discourage inessential motor vehicle use and help increase levels of walking, cycling and public transport use. Reducing car trips also helps make our roads safer for pedestrians, wheelchair users and cyclists.

- **Reduce pollution:**

Fees will reflect the emissions produced by vehicles, incentivising the use of cleaner vehicles for when car use is essential. Discouraging inessential motor vehicle use also reduces CO2 emissions and helps tackle poor air quality.

- **Fairer use of kerbside space:**

Only 35% of Camden residents are car owners. We are ensuring parking space is used efficiently, balancing the needs of all residents, businesses, and visitors, including those who don't own a car, van or motorbike.



Fairer Parking for All

The changes apply carbon-emissions based charging to many parking products. Lower charges for lower emission vehicles and higher charges for higher emission cars aim to make parking fairer and improve air quality.

Carbon Emissions and Air Pollution Equivalences

According to TfL, 5,029 miles is the average mileage driven per year among households with at least one full car licence holder.

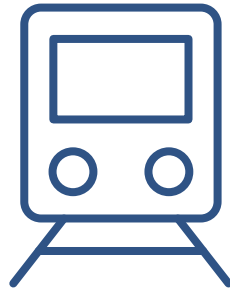


This results in

971.21

emissions of CO₂e kg/year*

This is the annual carbon footprint equivalent of:



17,017

miles by train



23,588

boiled kettles



7.3

London to Paris return flights

*based on statistics for 120g/km emissions vehicles



How Will the New Changes Work?

The new charges will be based on the vehicle's carbon emissions. Lower emission vehicles will have lower parking charges while higher emission vehicles will pay more. A new Air Quality Surcharge will replace the former Diesel Surcharge and will now cover older petrol and diesel vehicles. There will also be changes to parking terms and conditions.

What are Parking Fees and Charges Spent On?

Income received from parking fees and charges, including penalty charge notices (parking tickets), is used to cover the operational costs of the parking service. Any additional surplus is required by law to be reinvested into transport and the public highway for example highway improvement schemes, highway maintenance and public passenger transport.

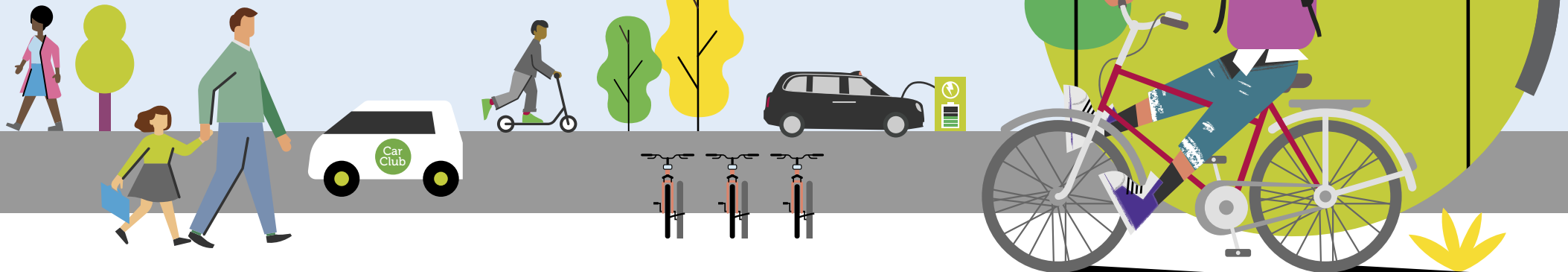
Transport Subsidies

In 2022/23, around £8 million was spent on public transport fares for the most vulnerable residents such as Freedom Passes and Taxi Card scheme and around £4 million was spent on home to school transport for disabled students.

For more information, please refer to our [Annual Parking Report on our Parking policies and guides - Camden Council](#)

Sustainable Travel Options

Walking, cycling, and public transport not only reduce traffic but also cut down on harmful toxins in the air we all breathe. Camden Council is committed to making cleaner travel easier.



When Will These Changes Take Effect?

The new parking fees will be introduced from 1 October 2024 with a phased approach over 2 years, with full implementation expected from 2026.

You can find more details about the changes and how they might affect you by visiting our [website](#) or contacting us directly.

Supporting Cleaner Forms of Travel

We aim to encourage sustainable travel options like walking, cycling, and public transport. These choices reduce traffic, improve air quality, and create safer streets. Camden Council is dedicated to making it easier for everyone to adopt these cleaner, healthier ways of getting around.

More resources to help you use more sustainable methods of travelling can be found on our [Green travel webpage](#).

Healthier Streets for Everyone

Camden's parking changes are part of a broader push for healthier, safer streets, contributing to Vision Zero, a goal of eliminating serious injuries on our roads by 2041.



Thank you for working with us to create a healthier, safer borough for everyone.

More Information

For more information on the topics within this document have a look at the following links:

[Decision Report - Parking Policy Review](#)

[Phase 1 Traffic Management Order Objection Report*](#)

[Parking fees and charges 2024/25](#)

[Cleaner Fairer Parking consultation](#)

[Camden Transport Strategy](#)

*proposed Phase 2 changes (motorcycle charges and visitor scratch cards) are subject to a separate TMO due later in 2024

