

# Parking Operations Enforcement Protocol

Your guide to how parking and moving traffic restrictions are enforced



# Contents

---

<b>01</b>	<b>Introduction and legislation</b>	<b>Page 3</b>
<b>02</b>	<b>Issuing, enforcement and legislation</b>	<b>Page 4</b>
<b>03</b>	<b>No waiting and no loading contraventions</b> Contravention codes 01 and 02	<b>Page 10</b>
<b>04</b>	<b>Paid for parking bay contraventions</b> Contravention codes 05 and 11	<b>Page 11</b>
<b>05</b>	<b>Resident permit bay contraventions</b> Contravention codes 12 and 19	<b>Page 12</b>
<b>06</b>	<b>Permit bay contraventions</b> Contravention code 16	<b>Page 13</b>
<b>07</b>	<b>Other bay contraventions</b> Contravention codes 14, 21, 23, 24, 25, 30, 40, 41	<b>Page 14</b>
<b>08</b>	<b>Other on-street contraventions</b> Contravention codes 26, 27, 28, 47, 48, 55, 61, 62, 63, 99	<b>Page 17</b>
<b>09</b>	<b>Off-street contraventions</b> Contravention codes 81, 85, 86	<b>Page 21</b>
<b>10</b>	<b>Moving traffic contraventions</b> Contravention codes 29, 31, 32, 33, 34, 38, 50, 51, 52, 53, 54	<b>Page 22</b>

## Introduction

Our enforcement protocol is a guide to our parking and moving traffic enforcement procedures. We believe that a reduction in both vehicle emissions and numbers will help to achieve our commitment to air quality. This in turn will allow us to play a part in reducing transport's contribution to the climate crisis.

Camden encourages residents and members of the public to consider their impact on the environment and we promote sustainable travel choices such as walking, cycling and using public transport. We also aim to reduce congestion on our roads and ensure the efficient movement of people and vehicles.

We provide a fair and consistent approach to parking and traffic enforcement which is aimed at benefiting the people who live in, work in or visit the borough through deterring inconsiderate or dangerous parking and driving.

This guide looks at individual contraventions and explains how they are enforced providing a useful reference to our procedures. While we aim to keep our information up to date and accurate, you should always check parking and traffic signs on street when parking or driving within Camden. Drivers should also check the conditions of any permit, badge or dispensation when parking in restricted areas.



## A guide to contravention codes

There are many different types of contraventions with each having varying lines and signs requirements and differing exemptions or permit provisions. This Enforcement Protocol aims to explain the various contraventions enforced within Camden. Each code has an explanation of its lines and signs requirements, applicable exemptions (these are stated as letters which are explained within the exemption table) and observation periods. The full [contravention code list](#) is on the London Councils' website.

## PCN charges

London Councils' Transport and Environment Committee is responsible, subject to agreement by the Mayor of London and the Secretary of State, for setting additional parking charges on London borough roads. A discount of 50% will apply to a PCN paid within 14 days of the date the PCN was issued (21 days for PCNs served by post).

Differential charging applies on the basis that there should be different charges for more serious and less serious contraventions and therefore PCNs are separated into two levels: higher and lower.

## Parking places

Most parking places in Camden require drivers to have a certain permit or purchase paid for parking time. The requirement is shown on a time plate along with the hours that the restriction applies. If no hours are stated the restrictions apply 24 hours a day, 7 days a week. The parking place will be marked on the road but the length and width may vary. The bay may be marked with lines or in restricted zones by different surface stones instead of bay markings. Drivers must make sure vehicles are parked within the limits of the parking place.

There are various parking zones within Camden including controlled parking zones, restricted zones and the green badge zone.



## Controlled Parking Zones

A [controlled parking zone](#) (CPZ) is an area where all streets are subject to parking controls. When you enter a zone you will see large CPZ entry signs.

The entry sign tells you the days and the hours when waiting is prohibited on single yellow lines within the zone (unless a sign next to the yellow line states otherwise).

Parking places are provided within CPZs and are individually signed with the restrictions. Usually the restricted hours will be the same as those shown on the entry signs but may differ.



## Restricted Zones – ‘Naked Street Scheme’

Camden has various locations that are part of our 'Naked Street Scheme' which is a restricted zone where all street markings have been removed. There are restricted zone entry signs stating that drivers are entering a restricted zone along with the restrictions in force.

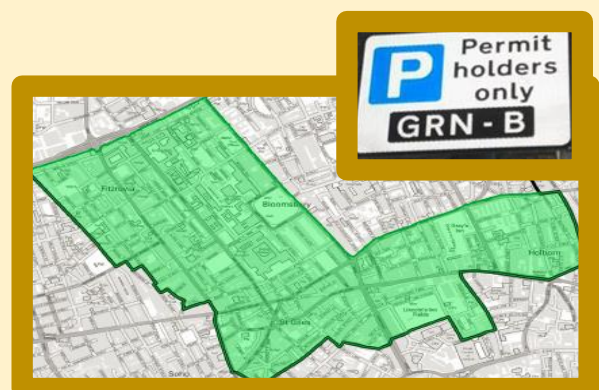
Waiting (parking) and loading are not permitted at any time except within designated bays. These designated parking bays are offset from the carriageway, in line with the footpath, and are identified by small blocks of granite coloured road surfacing. Each parking bay has its own signage that states the restrictions for that bay.

## The Green Badge Zone

The parking concessions given to blue badge holders do not apply in some of Camden's streets south of Euston Road. This area is called the [green badge zone](#).

This local scheme allows blue badge holders who live, work or study within these streets to apply for a green badge permit that allows them to park in the green badge zone. The green badge permit and other local schemes are designed to better manage the high demand for parking in central London.

Blue badge holders should check with the relevant boroughs for details of local parking arrangements before their journey.



## Issuing a Penalty Charge Notice (PCN)

A PCN will be issued when a vehicle is seen in contravention. PCNs can be issued by Civil Enforcement Officers (CEOs) on foot, bicycle or moped, as well as those using static CCTV cameras or mobile CCTV vehicles. PCNs may also be captured by unattended CCTV cameras where the PCN is reviewed by a CEO before issuing. Bus lane and moving traffic contraventions (MTCs) are enforced using both attended and unattended CCTV cameras.

An on-street PCN is usually fixed to the vehicle or handed to the person appearing to be the driver. If a vehicle is driven away after the PCN has been printed or the CEO is prevented from serving it, the PCN may be sent by post. Moving traffic and bus lane PCNs are issued by post.

CEOs will not find a driver to ask them to move their vehicle before issuing a PCN, as this is not practical or necessary in the issuing of a PCN. CEOs are not able to cancel PCNs on-street but any conversations with drivers are noted in their handheld devices. These notes are used when considering a PCN challenge.

We take a firm but fair approach and continue to take strong action against the minority of worst offenders as explained in our [vehicle removal policy](#).

## On-street and moving traffic legislation

Camden enforces parking and traffic regulations under the [Traffic Management Act 2004](#) (TMA 2004), the London Local Authorities Acts 1996-2003, the Civil Enforcement of Road Traffic Contraventions (Approved Devices, Charging Guidelines and General Provisions) (England) Regulations 2022 and the Civil Enforcement of Road Traffic Contraventions (Representations and Appeals) (England) Regulations 2022.

The TMA 2004 was introduced to bring London and non-London enforcement authorities in line and provide consistency across the country while allowing for parking policies to suit local circumstances. The TMA 2004 aims to make the system fair to motorists and it is effective in enforcing parking.

## Off-street legislation

Off-street parking means parking provisions which are not on the road, but rather off it, such as in car parks, garages, open spaces and similar. There is no significant difference between on-street and off-street PCN charges.

Camden operates limited off-street parking schemes on the Maiden Lane Estate. Contraventions in off-street parking places are subject to enforcement under the TMA 2004 and have their own PCN codes.

The signing and marking of off-street parking provisions is not included in the scope of the Traffic Signs Regulations and General Directions (TSRGD). Instead, this is left to local authorities to determine. However, Camden is keen to ensure drivers can recognise the various parking provisions and controls on estates and has emulated similar traffic signs and road markings as found on the highway.



## Deregulation Act 2015

The Deregulation Act 2015 introduced a 'grace period' of 10 minutes that was applied in various parking circumstances from 1 April 2015.

In parking bays the grace period only applies where the requirements of the bay have been satisfied - i.e. a paid for parking session has been purchased, the vehicle holds the relevant permit, is carrying out an exempted activity, etc. If these requirements are not met the vehicle will be subject to normal enforcement.

A vehicle parked outside controlled hours is considered to have parked at a time when no restrictions were in force and therefore has no requirements to satisfy. The 10 minute grace period will apply for the first 10 minutes of the next controlled parking period. For example, if the parking zone hours apply from 8.30am to 6.30pm and the vehicle was parked before 8.30am, the grace period would apply between 8.30am and 8.40am and no PCN should be issued until 8.41am.

It is important to note that the grace period only applies to 'designated parking places' and not on yellow lines, keep clears, zig-zags or suspended bays.

## [Challenge a PCN](#)

Motorists are legally entitled to challenge any PCN they receive if they believe that a legal exemption applies. The process to challenge PCNs is detailed on the PCN itself. Any motorist challenging a PCN should ensure they provide full details of the reason for their challenge, with supporting evidence where appropriate.

Along with the legal grounds for challenging a PCN, the Council will consider any mitigating factors presented. The Council can cancel any PCN where they feel discretion may be applied.

If a motorist is unsuccessful in challenging a PCN with the Council, they can refer the case to the Environment and Traffic Adjudicators (ETA) where the case will be considered by an independent adjudicator who is legally qualified (e.g. a solicitor or a barrister).



The below exemption table explains the various exemptions that apply to parking and moving traffic contraventions. Within this guide, each contravention code will state which exemption codes are applicable to that contravention.

CODE	EXEMPTION
A	Setting down and/or picking up of passengers, or to load or unload any personal luggage. This should not take longer than 2 minutes unless the person suffers from a disability.
B	A solo motorcycle or moped in a designated area.
C	Public service vehicles operating a Transport for London Bus Service (as defined by the Greater London Authority Act 1999), waiting at an authorised stopping place, terminal, or turning place.
D	Vehicles when used for fire brigade, ambulance or police purposes but not for convenience parking.
E	A vehicle on the service of the local authority providing that it is being used in the exercise of a statutory duty and it is necessary for the vehicle to wait in that location.
F	Licensed taxis waiting on an authorised taxi rank.
G	A vehicle taking in petrol, oil, water or air at the kerb-side e.g. a roadside garage.
H	1: A vehicle displaying a disabled person's badge. 2: A vehicle displaying a disabled person's badge and clock.
I	A vehicle used for a removal of furniture to or from adjacent premises.
J	A vehicle is prevented from moving by circumstances beyond the driver's control.
K	A vehicle involved in the removal of any obstruction to traffic.
L	A vehicle which is being used for loading/unloading, delivering/collecting of postal packets to or from a postal box or premises.
N	A vehicle which is used by or in the services of military or visiting military forces.
O	A vehicle waiting while a gate or barrier is opened/closed to allow access or departure to/from premises.
P	A vehicle which has been told to wait by a police constable in uniform or has to stop in order to avoid an accident.
Q	A stationary vehicle selling goods from a pitch on a restricted street whilst holding a licence from the Council to do so.



## Loading and unloading exemption

When loading or unloading please be aware of the restrictions in force. If there are kerb chevrons/blips on the kerb this means restrictions apply. Two kerb chevrons/blips mean that loading or unloading is not permitted at any time. One kerb chevron/blip means that loading or unloading is restricted at certain times and the time of restriction will be stated on a nearby time plate.



On single or double yellow lines, where there are no kerb chevrons/blips, loading or unloading can take place for an unlimited time from the end of controlled hours or 6.30pm, (whichever is earlier) to 11am the next day, if it is continuous and no other activity is taking place. Controlled hours are stated on the [controlled parking zone \(CPZ\)](#) entry signs (unless a localised time plate states differently).

After 11am and until the end of controlled hours or 6.30pm (whichever is earlier) and where no loading restrictions apply, heavy goods vehicles (above 3.5 tonnes) can load or unload on single and double yellow lines for up to 40 minutes if it is continuous and no other activity is taking place.

The loading or unloading exemption for cars and light goods vehicles (3.5 tonnes and below) such as small vans is up to 20 minutes from 11am until the end of controlled hours or 6.30pm (whichever is earlier) providing it is continuous and no other activity is taking place.

Please note that if loading or unloading activity is not seen the vehicle may be considered to be waiting and a CEO may issue a PCN.

## Observation times

The length of time that a CEO observes a vehicle is dependent on where the vehicle is parked and the size of the vehicle. If a vehicle is parked on yellow lines, CEOs will typically observe a private vehicle for 3 minutes, whereas vehicles over 3.5 tonnes will typically be given a longer observation period. If a vehicle is parked within bays where loading or unloading is allowed, typically a 3 minute observation period is given. Where loading or unloading is not permitted, such as within suspended bays or where loading restrictions are in force, an observation period may not be given and a PCN may be issued instantly.



Our contravention code sections explain whether an observation period is given for each contravention code.

# Waiting and loading contraventions

Code 01, 02

## Code 01 Parked in a restricted street during prescribed hours

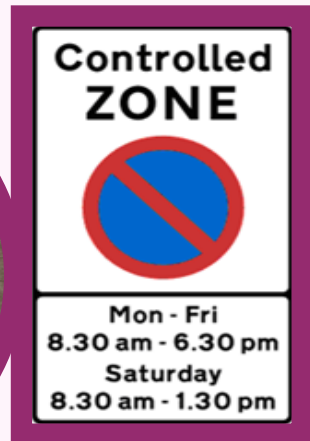
Higher fee PCN

Waiting restrictions are shown by yellow line/s and mean that vehicles may not be parked during restricted hours. A single yellow line indicates that waiting is not permitted at certain times of the day. The restriction may apply on some or all days of the week depending on traffic management needs. Double yellow lines indicate that waiting is not permitted at any time.

Most single yellow lines in Camden fall within a [controlled parking zone \(CPZ\)](#) with restricted times shown on the zone entry plate and are not accompanied by a nearby time plate. However, drivers should always check for localised time plates when parking as some single yellow line restrictions will differ within a CPZ as shown on the nearby time plate. Where there is a localised time plate (shown below), the restriction applies during the times shown.

Observation time – Yes: Observation times vary from 3-20 minutes depending on size of vehicle – refer to loading exemption explanation.

Common exemptions: Dropping off/Picking up  Loading   
 Complete exemption list: A B C D E F G H2 I J K L N O P Q



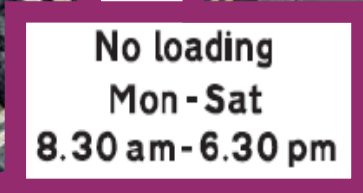
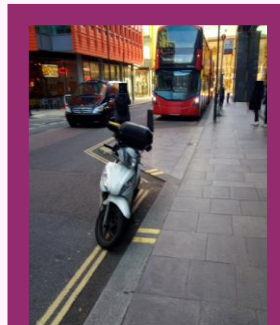
## Code 02 Parked or loading / unloading in a restricted street where waiting and loading / unloading restrictions are in force

Higher fee PCN

Loading restrictions are shown by yellow kerb markings. Single kerb chevrons/blips are accompanied by a time plate stating the time when loading is not permitted whereas double kerb chevrons/blips operate at any time and do not require a time plate.

Observation time – No

Common exemptions: Dropping off/Picking up   
 Complete exemption list: A B C D E F G J L N O P



# 04

## Paid for parking contraventions

Code 05, 11

### Code 05 Parked after the expiry of paid for time

Lower fee PCN

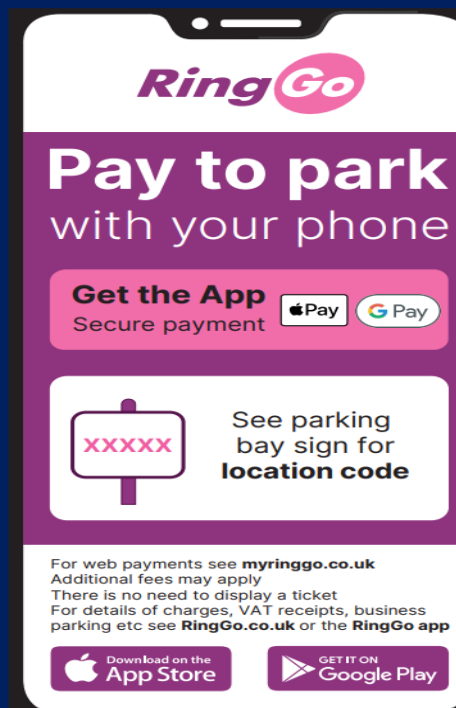
This contravention occurs when a vehicle is parked after the expiry of paid for parking time. When parking in a paid for parking bay a parking session must be purchased on arrival to cover the vehicle's stay. A parking session can be extended up to the maximum allowed stay prior to the initial session expiring.

Observation time – No

Grace period: A 10 minute grace period applies before a PCN can be issued – e.g. if the paid for parking session finishes at 9:45, a PCN may not be issued until 9:56 or after.

Common exemptions: Dropping off/Picking up  Loading

Exemption list: A D E H1 I J K L N O P



#### Camden terms and conditions of use

1. You must purchase a parking session which covers the time your vehicle is parked in this bay.
2. You may extend your parking session before it ends, but you must not stay longer than the maximum duration specified on the sign at the parking bay you are using.
3. After the expiry of your parking session, you must move your vehicle from the bay and not return within one hour.
4. You are liable for a penalty charge notice and your vehicle may be subject to further enforcement action if:
  - a) You fail to purchase a parking session for this bay.
  - b) Your vehicle exceeds the maximum stay or is parked after your parking session ends.
  - c) Your vehicle is not fully parked within the bay markings.
  - d) You park in a suspended bay.
  - e) You park the wrong class of vehicle in the bay.
  - f) You provide incorrect location code or vehicle details to purchase a parking session

Parking is free on Bank and Public Holidays, except where other restrictions apply.

#### Assistance

If you need assistance or have any queries about the service, please visit [myringgo.co.uk/help](https://myringgo.co.uk/help)

To report any issues with the bay or signage please contact Camden on 020 7974 4444



### Code 11 Parked without payment of the parking charge

Lower fee PCN

When parking in a paid for parking bay a parking session must be purchased on arrival to cover the vehicle's stay. If a vehicle does not have a valid session a contravention occurs.

Observation time – Yes

Common exemptions: Dropping off/Picking up  Loading

Exemption list: A D E H1 I J K L N O P

# 05

## Resident permit bay contraventions

Code 12, 19

**Code 12** Parked in a residents' or shared use parking place or zone without a valid virtual permit or clearly displaying a valid physical permit or voucher or pay and display ticket issued for that place where required, or without payment of the parking charge

Higher fee PCN

Vehicles parked in a resident bay are required to have a valid virtual or physical permit for that bay. In shared use bays, indicated by a shared use time plate, vehicles may also purchase paid for parking time. If a vehicle does not have a valid permit or paid for parking session a contravention occurs.

Observation time – Yes

Common exemptions: Dropping off/Picking up  Loading   
Complete exemption list: A D E H1 I J K L N O P

**Code 19** Parked in a residents' or shared use parking place or zone with an invalid virtual permit or displaying an invalid physical permit or voucher or pay and display ticket, or after the expiry of paid for time

Lower fee PCN

This contravention occurs when a vehicle parks with an invalid permit, e.g., an expired resident permit or an incorrectly validated visitor permit. It may also occur in shared use bays (indicated by a time plate) where a paid for parking session has expired. The permit or parking session would need to have been valid at some point for this contravention occur.

Observation time – Yes

Grace period: A 10 minute grace period applies after the visitor permit or paid for parking session expires, e.g., if the visitor permit or parking session finishes at 9:45, a PCN may not be issued until 9:56 or after.

Common exemptions: Dropping off/Picking up  Loading   
Complete exemption list: A D E H1 I J K L N O P



# 06

## Permit bay contraventions

Code 16

Code 16 Parked in a permit space or zone without a valid virtual permit or clearly displaying a valid physical permit where required

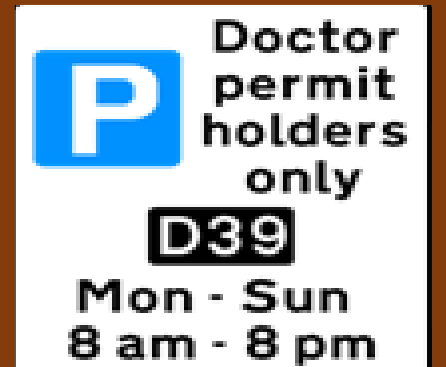
Higher fee PCN

This contravention occurs when a vehicle is parked in a permit space without a valid permit. This code applies to many different bays including doctor bays, dedicated disabled bays, green badge bays, business bays, trader bays, licensed ice-cream trader vehicle bays and car club bays.

Observation time – Yes in some bays only

Common exemptions: Dropping off/Picking up  Loading – in most bays but only if there is no other alternative place to park and the loading address is in close proximity to the permit bay in which the vehicle is parked.

Complete exemption list: A D E I J K L N O P



# 07

## Other bay contraventions

Code 14, 21, 23, 24, 25, 30, 40, 41

**Code 14** Parked in an electric vehicles' charging place during restricted hours without charging

Higher fee PCN

This contravention occurs when a vehicle is parked in an electric vehicle charging bay without the vehicle being charged. It is important that these bays are available to allow charging within the borough.

Observation time – Yes

Common exemptions: Dropping off/Picking up

Loading

Complete exemption list: A D E I J K L N O P



**Code 21** Parked wholly or partly in a suspended bay or space

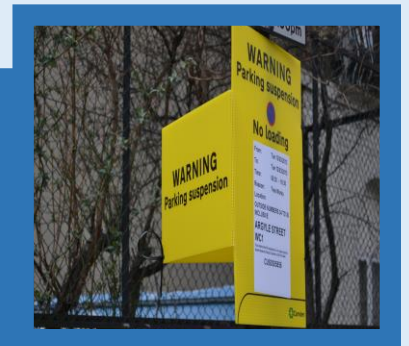
Higher fee PCN

Bays may be suspended for a range of reasons including domestic removals, statutory works, tree cutting, etc. Advanced warning is given where possible and an online alert system is available. Vehicles parked in suspended bays may prevent works from being undertaken.

Observation time – No

Common exemptions: Not applicable

Complete exemption list: D K N P



**Code 23** Parked in a parking place or area not designated for that class of vehicle

Higher fee PCN

Various bays in Camden are designated to a specific class of vehicle such as motorcycle bays, coach paid for parking bays, etc. If a vehicle which is not the designated class of vehicle for that bay parks within a designated bay during controlled hours it is parked in contravention.

Observation time – No

Common exemptions:

Dropping off/Picking up

Loading

Complete exemption list:

A B D E I J K L N O P



# 07

## Other bay contraventions

Code 14, 21, 23, 24, 25, 30, 40, 41

### Code 24 Not parked correctly within the markings of the bay or a space

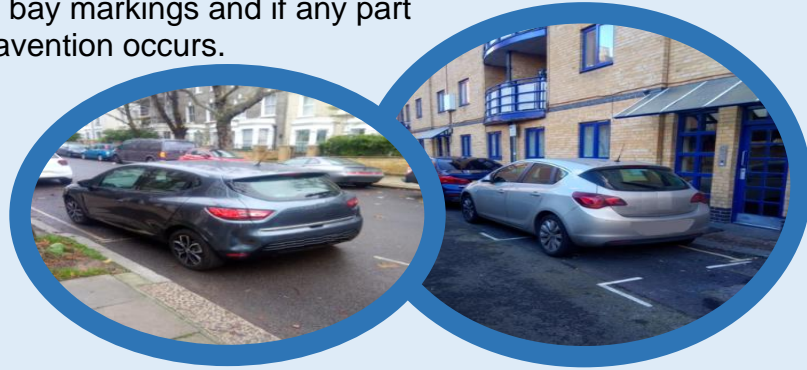
Lower fee PCN

This contravention occurs when a vehicle is not parked correctly within the markings of a bay or space. Vehicles are required to be parked wholly within the bay markings and if any part of the vehicle is not within the bay markings a contravention occurs.

Observation time – Yes

Common exemptions: Dropping off/Picking up   
Loading

Complete exemption list: A D E I J K L N O P



### Code 25 Parked in a loading place or bay during restricted hours without loading

Higher fee PCN

This contravention occurs when a vehicle parks in a loading bay during restricted hours without loading or unloading. These bays are provided to allow loading or unloading to occur to or from nearby premises. Some loading bays are time limited – e.g. in CPZ CA-C where a 40 minute time limit applies.

Observation time – Yes

Common exemptions: Dropping off/Picking up   
Loading

Complete exemption list: A D E I J K L N O P



### Code 30 Parked for longer than permitted

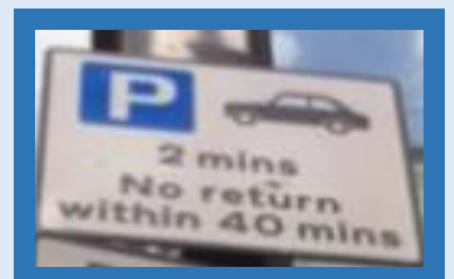
Lower fee PCN

This contravention code covers a number of bays where a vehicle parks for longer than the permitted period. This contravention includes time limited blue badge bays and within set down parking places.

Observation time – Yes

Common exemptions: Dropping off/Picking up   
Loading  - loading exemption does not apply within set down parking places.

Complete exemption list: A D E H1 I J K L N O P



# 07

## Other bay contraventions

Code 14, 21, 23, 24, 25, 30, 40, 41

**Code 40 Parked in a designated disabled person's parking place without displaying a valid disabled person's badge in the prescribed manner**

**Higher fee PCN**

This contravention occurs when a vehicle waits in a disabled person's parking place without displaying a valid disabled person's parking badge and clock where required. To be eligible for the parking concession the vehicle must be correctly displaying a valid disabled person's parking badge (blue badge) and clock where required.

Observation time – Yes

Common exemptions: Dropping off/Picking up   
Loading

Complete exemption list: A D E H1 I J K N P



**Code 41 Stopped in a parking place designated for diplomatic vehicles**

**Higher fee PCN**

This contravention occurs when a vehicle other than a diplomatic vehicle parks within a diplomatic bay. Diplomatic bays are designated for the use of diplomatic vehicles only. These bays can be identified by their time plate.

Observation time – No

Common exemptions: Not applicable  
Complete exemption list: D J K N P





# 08

## Other on-street contraventions

Code 26, 27, 28, 47, 48, 55, 61, 62, 63, 99

**Code 26** Parked in a special enforcement area more than 50cm from the edge of the carriageway and not within a designated parking place

Higher fee PCN

This contravention occurs when a vehicle is parked more than 50cm from the edge of the carriageway (kerb) and not within a designated parking space. This is also referred to as 'double parking'.

Observation time – Yes

Common exemptions: Dropping off/Picking up   
Loading  - only if no alternative parking place is available

Complete exemption list: A D E I J K L N O P



**Code 27** Parked in a special enforcement area adjacent to a footway, cycle track or verge lowered to meet the level of the carriageway

Higher fee PCN

This contravention occurs when a vehicle waits on an area (footway, cycle track/lane or verge) that has been lowered to meet the level of the carriageway. Vehicles parked in this location limit access to crossing points for wheelchair users and other wheeled carriages such as prams, buggies or pushchairs.

Observation time – Yes

Common exemptions: Dropping off/Picking up   
Loading  - only if no alternative parking place is available

Complete exemption list: A D E I J K L N O P



**Code 28** Parked in a special enforcement area on part of the carriageway raised to meet the level of the footway, cycle track or verge

Higher fee PCN

This contravention occurs when a vehicle waits on an area (footway, cycle track/lane or verge) that has been raised to meet the level of the carriageway. Vehicles parked in this location limit access to crossing points for wheelchair users and other wheeled carriages such as prams, buggies or pushchairs.

Observation time – Yes

Common exemptions: Dropping off/Picking up   
Loading  - only if no alternative parking place is available

Complete exemption list: A D E I J K L N O P



## Other on-street contraventions

Code 26, 27, 28, 47, 48, 55, 61, 62, 63, 99

### Code 47 Stopped on a restricted bus stop or stand

Higher fee PCN

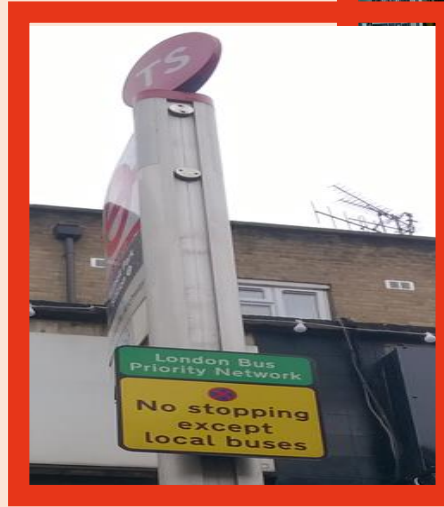
This contravention occurs when a vehicle (other than a public service vehicle operating a scheduled service) stops during the prescribed hours on a restricted bus stop or stand. These areas will be marked by yellow markings and have the words 'BUS STOP' or 'BUS STAND'.

Observation time – No

Common exemptions:

Dropping off/Picking up  but only for licensed Hackney Carriages

Complete exemption list: C D E J K N P



### Code 48 Stopped in a restricted area outside a school, a hospital or a fire, police or ambulance station when prohibited

Higher fee PCN

This contravention occurs when a vehicle stops when prohibited on a section of carriageway outside a school, hospital or fire, police or ambulance station. The area will be marked with 'keep clear' and zigzag markings. There will also be a time plate with the control hours displayed if applicable. If the restricted area is outside a school the restriction is only in force during term time.

Observation time – No

Common exemptions: Not applicable

Complete exemption list: D N P



## Other on-street contraventions

Code 26, 27, 28, 47, 48, 55, 61, 62, 63, 99

**Code 55 A commercial vehicle parked in a restricted street in contravention of the overnight waiting ban**

Higher fee PCN

This contravention occurs when a commercial vehicle over the indicated max gross weight (usually either 5 or 7.5 tonnes excluding passenger carrying vehicles designed to carry fewer than 13 passengers) waits in a restricted street during the prescribed hours.

Observation time – No

Common exemptions: Loading

Complete exemption list: A C D E G K L N O P



**Code 61 A heavy commercial vehicle wholly or partly parked on a footway, verge or land in between two carriageways**

Higher fee PCN

This contravention occurs when a heavy commercial vehicle waits on any part of the footway, verge or land between two carriageways. Parking in this manner can cause damage and may inconvenience pedestrians and other road users.

Observation time – Yes

Common exemptions: Loading  - maximum 20 minutes but only if the vehicle is essential to the loading activity and the loading cannot be carried out elsewhere. The vehicle must also be attended at all times so it can be moved if needed to allow pedestrians access to the pavement.

Complete exemption list: D N O P



# 08

## Other on-street contraventions

Code 26, 27, 28, 47, 48, 55, 61, 62, 63, 99

**Code 62 Parked with one or more wheels on or over a footpath or any part of the road other than a carriageway**

**Higher fee PCN**

This contravention occurs when a vehicle waits on any part of the footway, verge or land between two carriageways. Parking in this manner can cause damage and may inconvenience pedestrians and other road users.

Observation time – Yes

Common exemptions: Loading  - maximum 20 minutes but only if the vehicle is essential to the loading activity and the loading cannot be carried out elsewhere. The vehicle must also be attended at all times so it can be moved if needed to allow pedestrians access to the pavement.

Complete exemption list: D N O P



**Code 63 Parked with engine running where prohibited**

**Lower fee PCN**

This contravention occurs when a vehicle is parked with the engine running.

Observation time – No

Common exemptions: Dropping off/Picking up

Complete exemption list: A C D E F I K L N O P



**Code 99 Stopped on a pedestrian crossing or crossing area marked by zigzags**

**Higher fee PCN**

This contravention occurs when a vehicle (or part of a vehicle) waits on any part of the zigzag markings or the crossing area of a pedestrian crossing.

Observation time – No

Common exemptions: Not applicable

Complete exemption list: D N P



# 09

## Off-street contraventions

Code 81, 85, 86

### Code 81 Parked in a restricted area in an off-street car park or housing estate

Higher fee PCN

This contravention occurs when a vehicle is parked where parking is not permitted or is restricted. For example, vehicles parked in walkways, pedestrian areas, etc.

Observation time – No

Common exemptions: Dropping off/Picking up   
Exemption list: A B C D E F G J L N O P



### Code 85 Parked without a valid virtual permit or clearly displaying a valid physical permit where required

Higher fee PCN

This contravention occurs when a vehicle is parked without a valid virtual permit or clearly displaying a valid physical permit. This applies to permits that have expired or are obscured or illegible. PCNs can be issued to vehicles parked within permit bays including blue badge bays.

Observation time – Yes

Common exemptions: Dropping off/Picking up   
Loading   
Exemption list: A D E H1 I J K L N O P



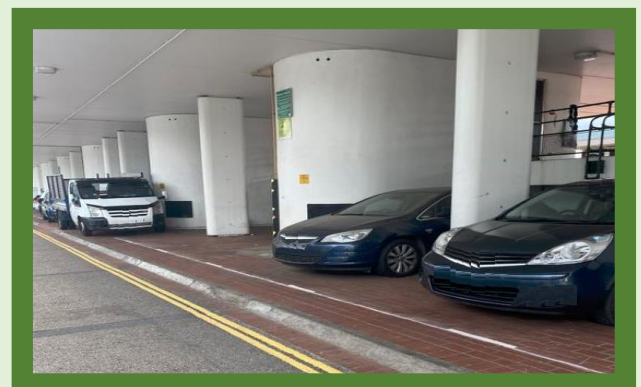
### Code 86 Not parked correctly within the markings of a bay or space

Lower fee PCN

This contravention occurs when a vehicle waits with part of the vehicle outside the markings of a parking bay or space.

Observation time – Yes

Common exemptions: Dropping off/Picking up   
Loading  - only if no other parking alternative is available  
Exemption list: A D E I J K L N O P



# 10

## Moving traffic restrictions

Code 29, 31, 32, 33, 34, 38, 50, 51, 52, 53, 54

### Code 29 Failing to comply with a one-way restriction

Higher fee PCN

This contravention occurs when a vehicle fails to proceed in the direction indicated by the arrow.

Common exemptions:  
Not applicable

Exemption list: D K N P



### Code 31 Entering and stopping in a box junction when prohibited

Higher fee PCN

This contravention occurs when a vehicle enters and stops in a box junction. This is most commonly caused when the exit to the junction is blocked by stationary vehicles.

Common exemptions:  
Not applicable  
Exemption list: D N P

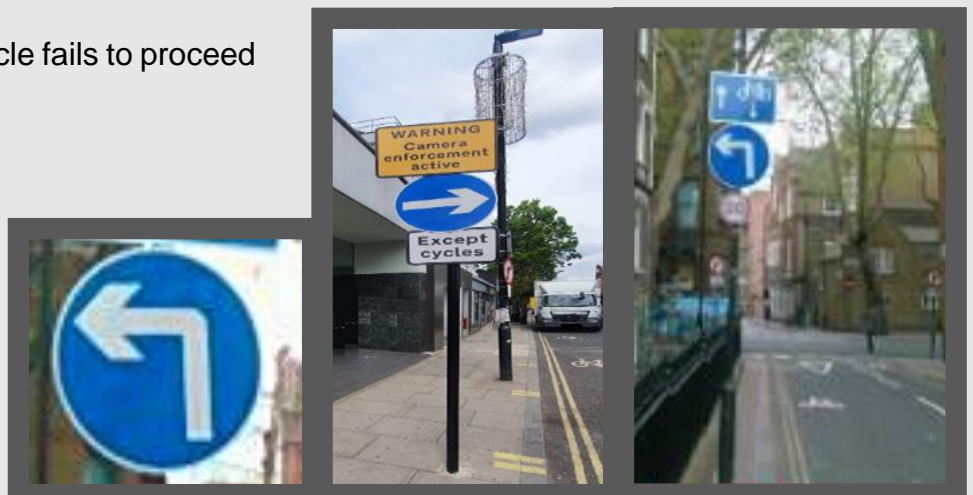


### Code 32 Failing to proceed in the direction shown by the arrow on a blue sign

Higher fee PCN

This contravention occurs when a vehicle fails to proceed in the direction indicated by the arrow.

Common exemptions:  
Not applicable  
Exemption list: D K N P



# 10

## Moving traffic restrictions

Code 31, 32, 33, 34, 38, 50, 51, 52, 53, 54

### Code 33 Using a route restricted to certain vehicles

Higher fee PCN

This contravention occurs when a vehicle is seen travelling on a route restricted to the types of vehicle(s) shown on the sign.

Common exemptions:  
Not applicable  
Exemption list: D N

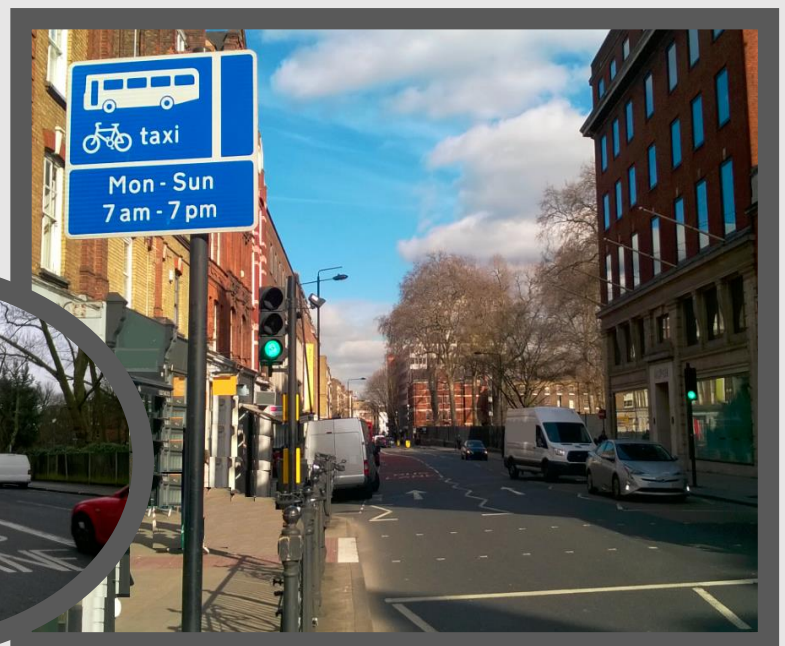


### Code 34 Being in a bus lane

Higher fee PCN

This contravention occurs when a vehicle is seen in a bus lane during operational hours. Only the vehicles shown on the adjacent signs are permitted to use the bus lane during these hours. Drivers may enter the bus lane so they can allow passengers to board or alight at the kerbside. Drivers may cross the bus lane to enter a driveway or side street.

Common exemptions: Dropping off/Picking up   
Loading   
Exemption list: A C D E J K N O P



# 10

## Moving traffic restrictions

Code 31, 32, 33, 34, 38, 50, 51, 52, 53, 54

**Code 38 Failing to comply with a sign indicating that vehicular traffic must pass to the specified side of the sign**

Higher fee PCN

This contravention occurs when a vehicle passes to the incorrect side of the white arrow on the blue sign.

Common exemptions:  
Not applicable  
Exemption list: D N



**Code 50 Performing a prohibited turn**

Higher fee PCN

This contravention occurs when a vehicle is seen failing to comply with a sign indicating a prohibited turn. Vehicles may not turn in the direction indicated on the sign.

Common exemptions:  
Not applicable  
Exemption list: D



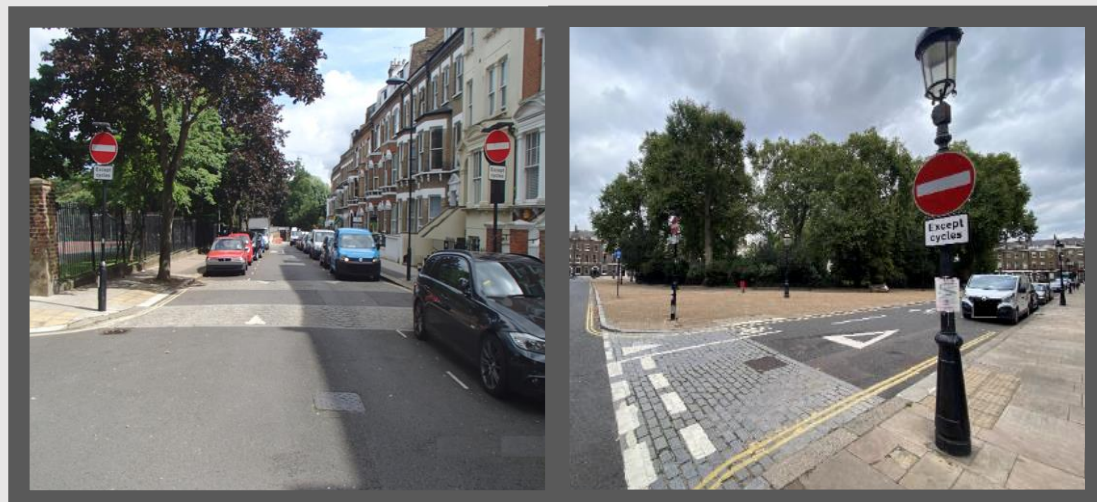
**Code 51 Failing to comply with a no entry restriction**

Higher fee PCN

This contravention occurs when a when a vehicle is seen failing to comply with a no entry sign.

Any exception will be signed beneath the no entry sign such as 'except cycles'.

Common exemptions:  
Not applicable  
Exemption list: D





# Moving traffic restrictions

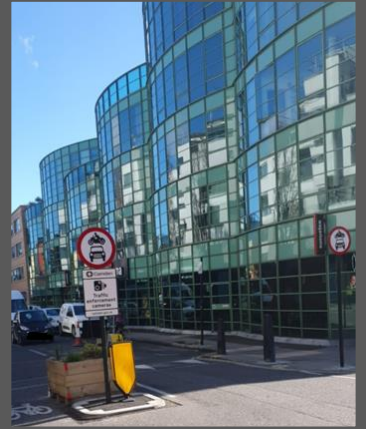
Code 31, 32, 33, 34, 38, 50, 51, 52, 53, 54

## Code 52 Failing to comply with a prohibition on certain types of vehicle

Higher fee PCN

This contravention occurs when a vehicle enters a street or zone when a prohibition on that type of vehicle is in force. The prohibited types of vehicles will be shown on the sign and will vary at different locations.

Common exemptions:  
Not applicable  
Exemption list: D



## Code 53 Failing to comply with a restriction on vehicles entering a pedestrian zone

Higher fee PCN

This contravention occurs when a vehicle enters a pedestrian zone when a restriction is in force. Vehicles indicated on the sign are prohibited.

Common exemptions:  
Not applicable  
Exemption list: D P



## Code 54 Failing to comply with a restriction on vehicles entering and waiting in a pedestrian zone

Higher fee PCN

This contravention occurs when a vehicle enters or waits in a pedestrian zone when a restriction is in place.

Common exemptions:  
Not applicable  
Exemption list: D N P

